

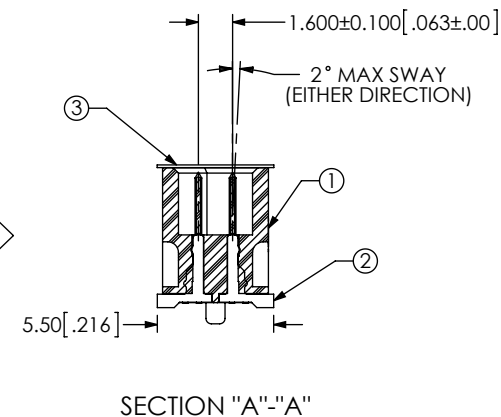
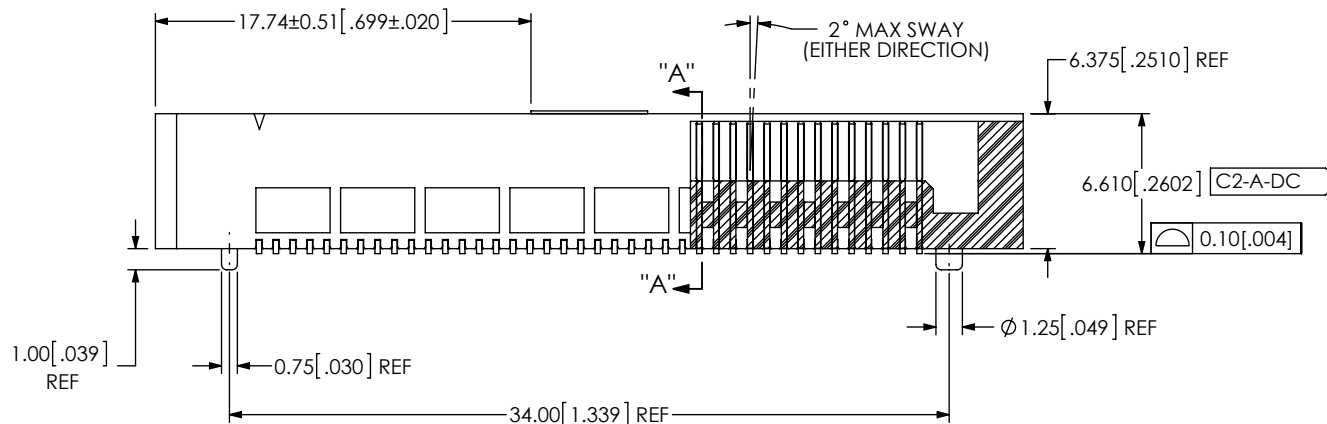
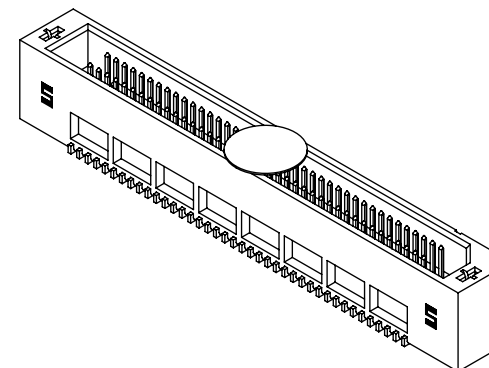
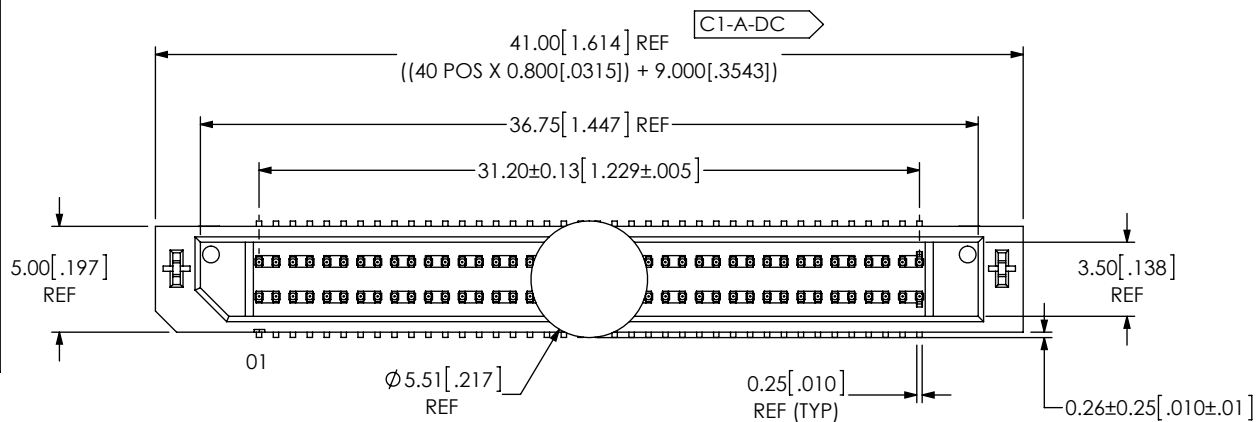
# REVISION

0	TW	L GELIN
9/11/2015	ECN-25867	
ISSUE FOR REVIEW		

## NOTES:

1. SET UP FOR TRACKING IS NOT AVAILABLE AS STANDARD. C3-B-VE
2. CUSTOMER PART #: 26056.
3. C-X-X-XX REPRESENTS A CRITICAL DIMENSION.
4. MINIMUM PUSHOUT FORCE: 2.22N [.5 LBF]
5. MAXIMUM HEIGHT VARIATION BETWEEN ANY TWO POSTS: 0.13 [.005]
6. PARTS TO BE PACKAGED IN TAPE & REEL.

DESIGNED & DIMENSIONED  
IN MILLIMETERS [INCHES]



NOT RELEASED  
FOR PRODUCTION

USE FOR QUOTING, PRELIMINARY  
DESIGN, PROTOTYPING AND  
INFORMATIONAL PURPOSES ONLY

BY SIGNING THIS DOCUMENT  
YOU ARE ACCEPTING THE  
CONDITIONS SET WITHIN.  
YOUR REQUIREMENTS MUST BE  
LISTED WITHIN THIS DRAWING.  
WHERE NO DIRECTION FROM THE  
CUSTOMER IS IDENTIFIED  
SAMTEC'S PROCESS  
REQUIREMENTS WILL BE USED.

DATE: \_\_\_\_\_  
COMPANY: \_\_\_\_\_  
CUSTOMER SIGNATURE: \_\_\_\_\_  
PRINTED NAME: \_\_\_\_\_  
PHONE NO.: \_\_\_\_\_  
EXCEPTIONS: \_\_\_\_\_

UNLESS OTHERWISE SPECIFIED,  
DIMENSIONS ARE IN MILLIMETERS.  
TOLERANCES ARE:  
DECIMALS ANGLES  
.X: ±.3[.01]  
.XX: ±.13[.005]  
.XXX: ±.051[.0020]

**PROPRIETARY NOTE**  
THIS DOCUMENT CONTAINS CONFIDENTIAL AND  
PROPRIETARY INFORMATION AND ALL DESIGN,  
MANUFACTURING, REPRODUCTION, USE, PATENT RIGHTS  
AND SALES RIGHTS ARE EXPRESSLY RESERVED BY SAMTEC,  
INC. THIS DOCUMENT SHALL NOT BE DISCLOSED, IN WHOLE  
OR PART, TO ANY UNAUTHORIZED PERSON OR ENTITY NOR  
REPRODUCED, TRANSFERRED OR INCORPORATED IN ANY  
OTHER PROJECT IN ANY MANNER WITHOUT THE EXPRESS  
WRITTEN CONSENT OF SAMTEC, INC.



520 PARK EAST BLVD, NEW ALBANY, IN 47150  
PHONE: 812-944-6733 FAX: 812-948-5047  
e-Mail: info@SAMTEC.com code 53322

DO NOT SCALE DRAWING SHEET SCALE: 2.8:1  
PLATING:  
CONTACT AREA: .000030 MIN GOLD OVER .000050 NICKEL PHOSPHORUS  
REMAINDER: .000003 MIN GOLD OVER .000050 NICKEL PHOSPHORUS

DESCRIPTION:  
MODIFIED .8mm TIGER EYE MICRO TERMINAL ASM

DWG. NO. REF-189018-01

BY: WHELAN 09/11/2015 SHEET 1 OF 1

F:\dwg\sw\Ref\189000\REF-189018-01.SLDDRW

ITEM NO.	PART NUMBER	QUANTITY	MATERIAL
1	TEM-40-04.0-A	1.0000	VECTRA E130i, COLOR: BLACK
2	T-1M58-04.0-H	80.0000	PHOS BRONZE, 510 SPRING TEMPER
3	K-DOT-.217-.313-.005	1.0000	POLYIMIDE FILM
4	CT-TEM012MS	1.45684	CONDUCTIVE POLYMER